



# Two Story Office Building For Lease

2200 Sunrise Blvd, Gold River, California

## Property Details

- » 3,069 rentable square feet available
- » Corner Suite with Double Door Entrance
- » Secured garage parking - 4/1000 Common Parking
- » Frontage along Sunrise Boulevard with immediate access to Hwy 50

**(916) 361-8000**

**BILL F. BOULDIN**  
[bbouldin@boueng.com](mailto:bbouldin@boueng.com)  
DRE Lic: 00812209

**GLENN L. ENGLISH**  
[genglish@boueng.com](mailto:genglish@boueng.com)  
DRE Lic: 00840864

**BOULDIN & ENGLISH**  
COMMERCIAL REAL ESTATE

10411 Old Placerville Road Ste 215  
Sacramento, California 95827  
[www.boueng.com](http://www.boueng.com)





## FOR LEASE

### 2200 Sunrise Boulevard Gold River, CA

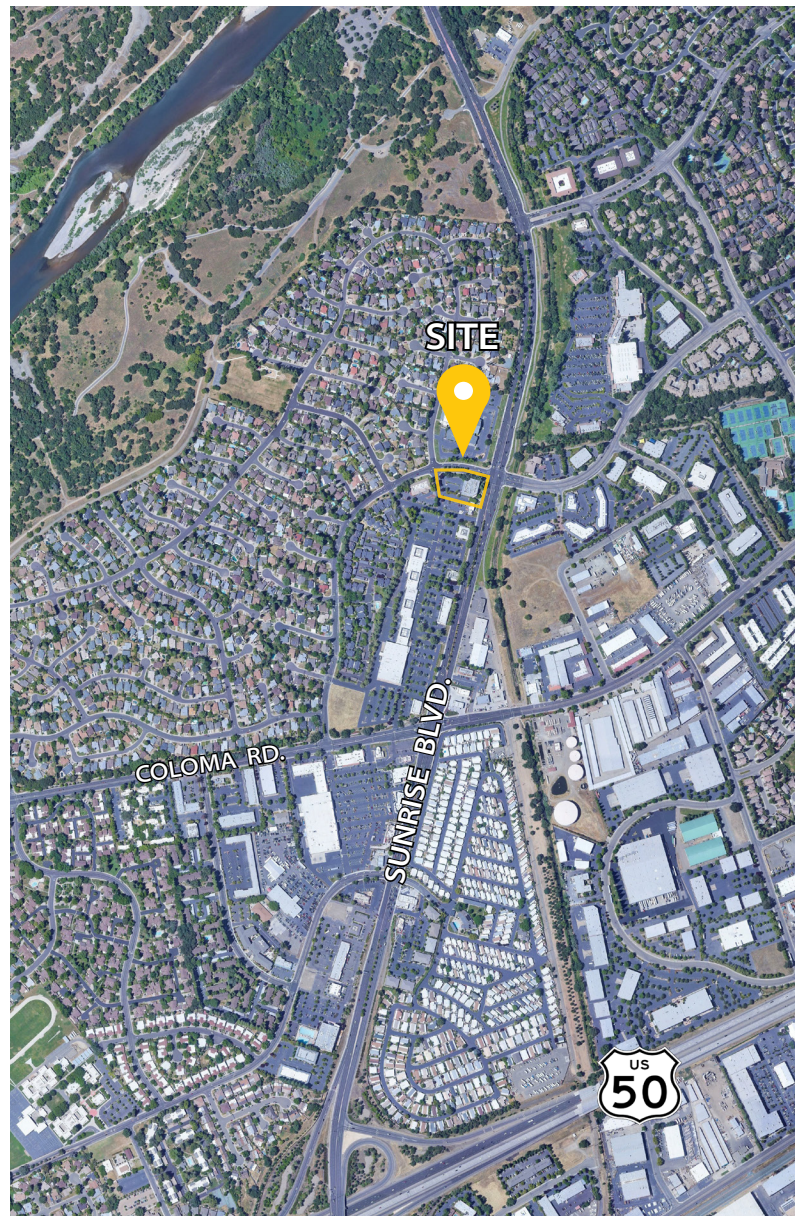
## Office Square Feet Available

» Suite 220: 3,069 RSF

## The Property

This property is a medical / office building situated in the region's largest suburban office submarket along one of the busiest corridors in Sacramento. It is home to a diverse group of office and medical users. The property offers great exposure along Sunrise Boulevard and is within walking distance to an abundance of retail shopping centers and restaurants.

Address:	2200 Sunrise Blvd., Gold River, CA
Location:	Located in the Highway 50 Submarket
Available Square Feet	3,069 RSF
Min/Max Divisible:	3,069 RSF
Parking:	4/1000
Zoning:	CMU
Sprinklers:	Yes





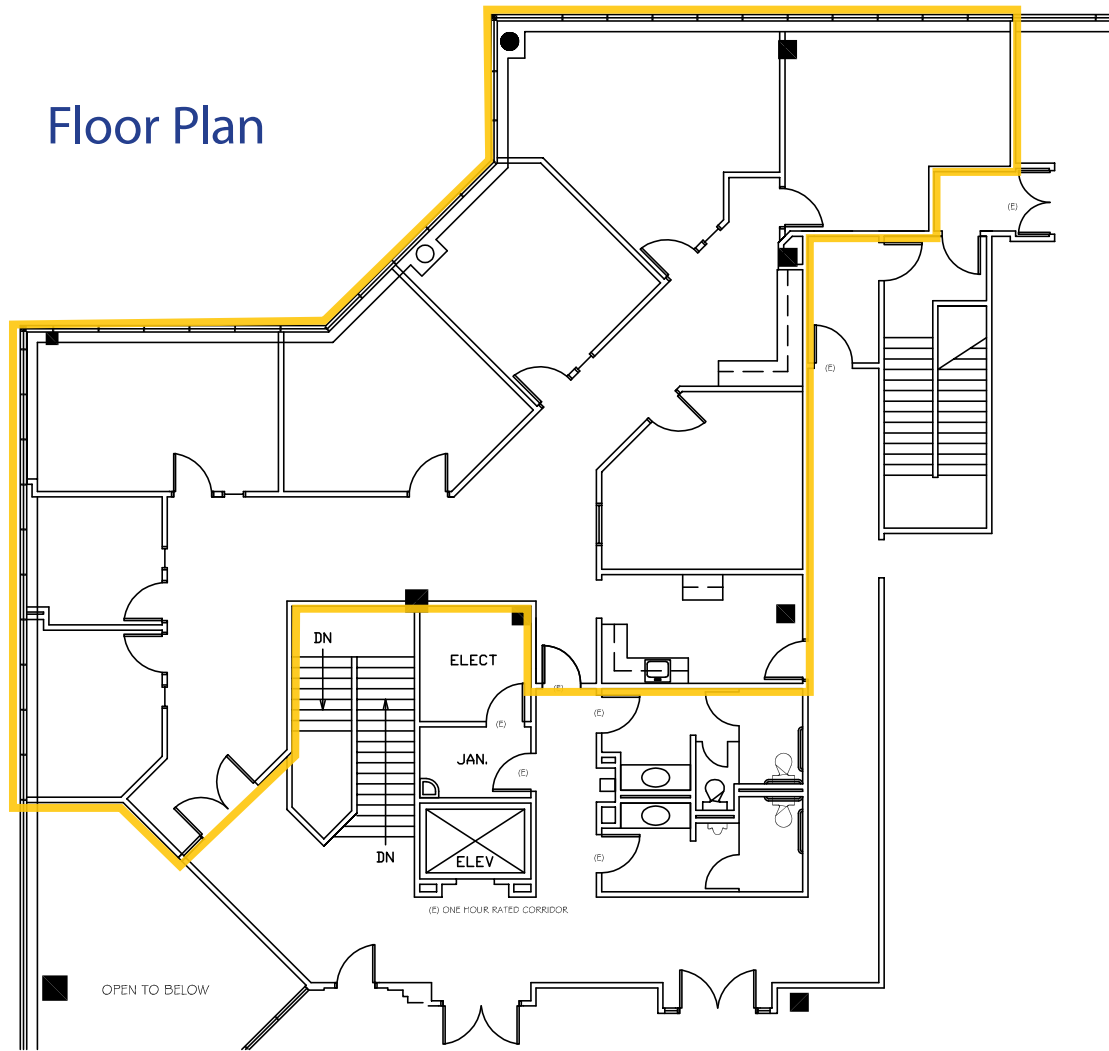


## Other Tenants

- » Dignity Health Plastic Surgery & Laser Center
- » EYEcenter Optometric
- » Mortgage Consultants Group
- » Sunriver Dental Care
- » Elite Solutions
- » Shape, Inc.



## Floor Plan



**BOULDIN & ENGLISH**  
COMMERCIAL REAL ESTATE

The information contained herein has either been given to us by the owner of the property or obtained from sources we deem reliable. We have no reason to doubt its accuracy, but we do not guarantee it. Prospective Tenants should carefully verify the items of information contained herein.